



**Lost Recovery Network, Inc.**

---

**LRNI Antenna Specifications:  
October 2006**

**Main Office:**

406 Dixon Street  
Vidalia, GA 30474  
Phone: 912.537.3901  
Toll-Free: 877.693.1456  
Fax: 912.538.7547  
E-mail: [info@lrni.com](mailto:info@lrni.com)  
Website: [www.LRNI.com](http://www.LRNI.com)

**LRNI ELITE-SERIES Antennas accomplish single floor coverage in multi-floor facilities. LRNI antennas smooth/decrease dbi spread of received signal.**

LRNI ELITE-SERIES Antennas are multi-purpose close proximity and for long range up to 1,000 feet. Specific coverage areas can be configured for indoor and out door use.

LRNI antennas offer a wide read field and high-speed RF signal conversion for optimal communication between RFID tags and RFID readers. They are ideal for high-throughput communication of RFID tags and meet standard technical requirements for most RFID implementation. Elite Series Antennas operate in the 303 MHz to 450 MHz frequencies. All antennas are available with SMA male or female connectors and are deployment-ready with RFID readers.

Contained in NEMA enclosures, LRNI ELITE SERIES antennas are able to withstand extreme heat and cold, as well as moisture and vibration. These antennas are ideal for nearly any application, including retail, manufacturing, wholesale distribution, healthcare, government and more. Multiple connector options ensure that we can build an antenna to suit your application.

Easy to install, the antenna can be mounted above or below ceilings or wall-mounted. Enclosures can also be wood finish to match decor. Our antennas can be custom mounted anywhere assets are located in a facility.

LRNI Directional Antennas complement our Monarch Software Solutions Suite that enables facilities to capture, move and manage critical data and information to and from every point of business activity.

**SL-6 and SL-4** Omni-directional, short to mid-range antenna great for covering rooms, sections of hallways, soiled and clean rooms, doorways, etc.

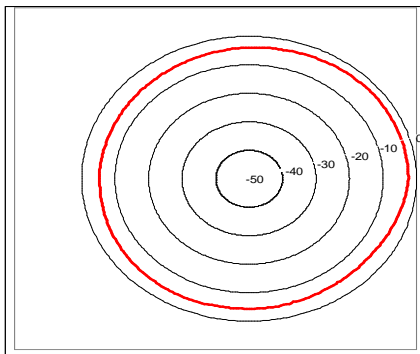
Antenna	SL-6 and SL-4
<b>Physical Characteristics</b>	
Type	Low-gain Omni-directional
Dimensions (in.)	1 x 1 x 6
Weight (ozs.)	5
Radome/Casing	Industrial CPVC
<b>User Environment</b>	
Temperature: Operating and Storage	-20° to +70° C (-4° to +158° F)
Connector	SMA standard, BNC and others available
Frequency	303 MHz to 450 MHz
Range (diameter)	1 to 200 feet
Front to back Ratio	20dB
Maximum Power Input	.5 watts

SL-6 shown in Black with SMA connectors.

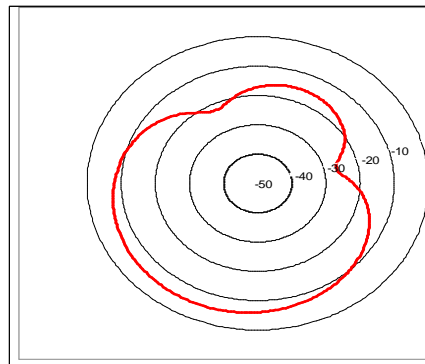


SL-4 Antenna is half the size & power of the SL-6.

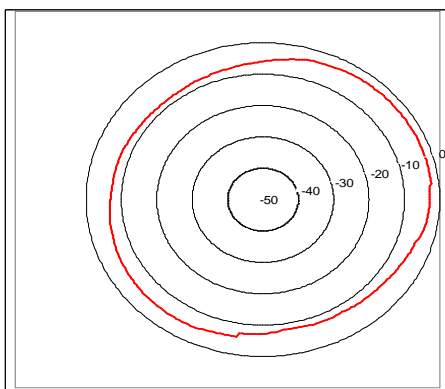
**303 MHz Horizontal Pattern**



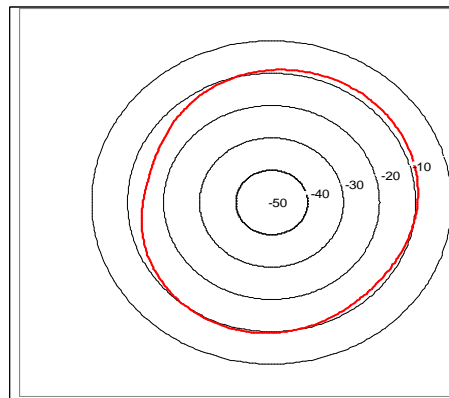
**303 MHz Vertical Pattern**



**433 MHz Horizontal Pattern**



**433 MHz Vertical Pattern**



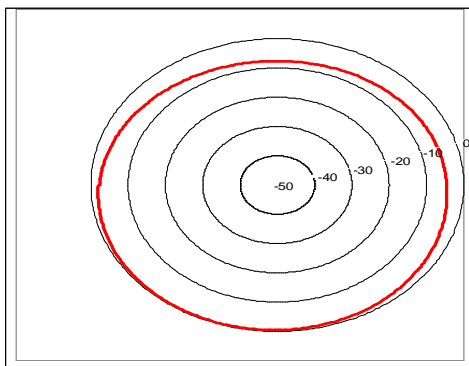
# LD1003 Short to mid-range Omni-directional antenna with many possible applications.

Antenna	LD1003
<b>Physical Characteristics</b>	
Type	Low-gain Omni-directional
Dimensions (in.)	4 x 4 x 4
Weight (ozs.)	6
Radome/Casing	NEMA 4/4x Thermoplastic
<b>User Environment</b>	
Temperature: Operating and Storage	-20° to +70° C (-4° to +158° F)
Connector	SMA standard, BNC and others available
Frequency	303 MHz to 450 MHz
Range (diameter)	1 to 200 feet
Front to back Ratio	20dB
Maximum Power Input	.5 watts

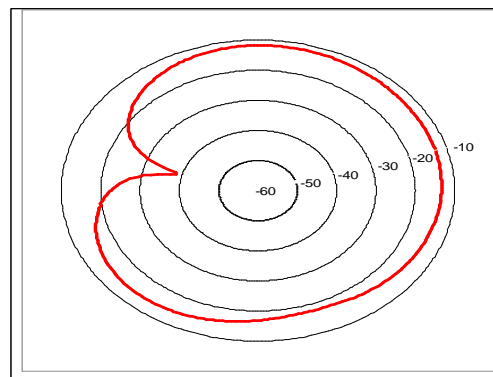


LD1003 shown in white with standard SMA connector.

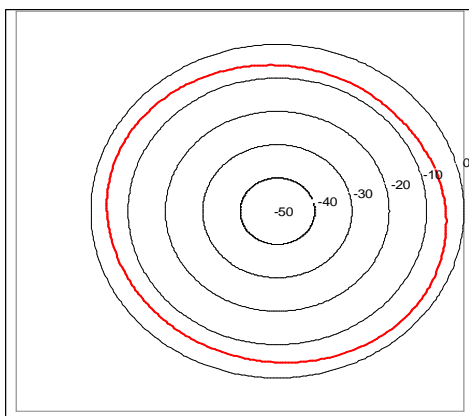
**303 MHz Horizontal Pattern**



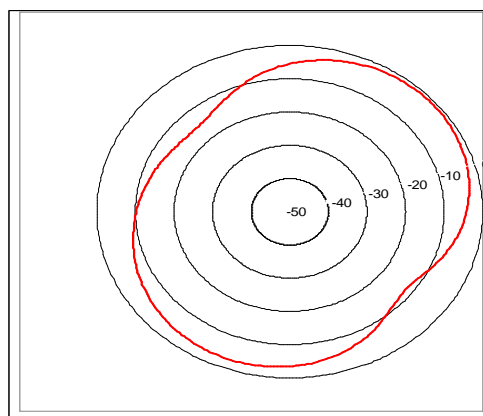
**303 MHz Vertical Pattern**



**433 MHz Horizontal Pattern**



**433 MHz Vertical Pattern**



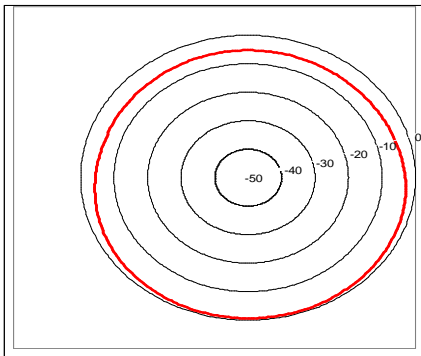
# LD250 Short to long-range Directional antenna that works well covering hallways.

Antenna	LD250
<b>Physical Characteristics</b>	
Type	Low-gain Directional
Dimensions (in.)	4 x 4 x 6
Weight (ozs.)	12
Radome/Casing	NEMA 4/4x Thermoplastic
<b>User Environment</b>	
Temperature: Operating and Storage	-20° to +70° C (-4° to +158° F)
Connector	SMA standard, BNC and others available
Frequency	303 MHz to 450 MHz
Range (diameter)	1 to 300 feet
Front to back Ratio	20dB
Maximum Power Input	.5 watts

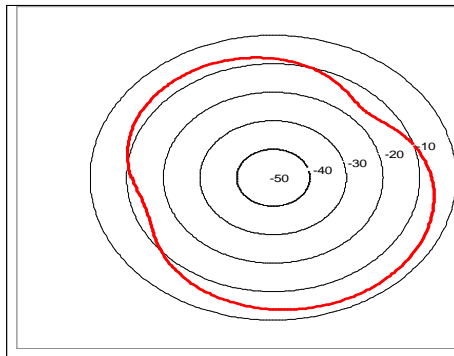


LD250 in white with standard SMA-F connector.

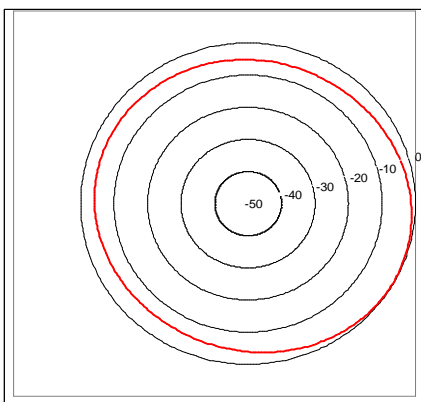
303 MHz Horizontal Pattern



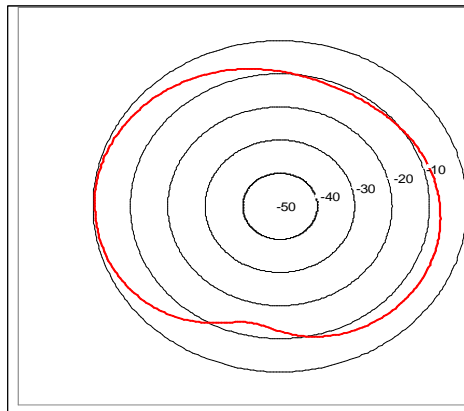
303 MHz Vertical Pattern



433 MHz Horizontal Pattern



433 MHz Vertical Pattern



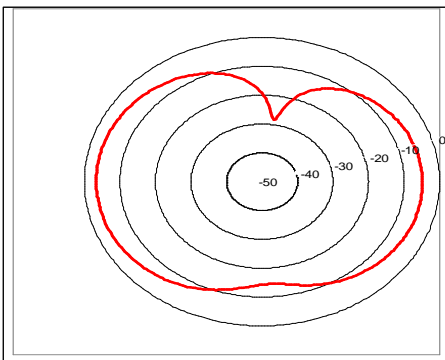
# PLS Short to mid-range antenna.

Antenna	PLS
<b>Physical Characteristics</b>	
Type	Low-gain Directional
Dimensions (in.)	4 x 4 x 4
Weight (ozs.)	8
Radome/Casing	NEMA 4/4x Thermoplastic
<b>User Environment</b>	
Temperature: Operating and Storage	-20° to +70° C (-4° to +158° F)
Connector	SMA standard, BNC and others available
Frequency	303 MHz to 450 MHz
Range (diameter)	1 to 200 feet
Front to back Ratio	20dB
Maximum Power Input	.5 watts

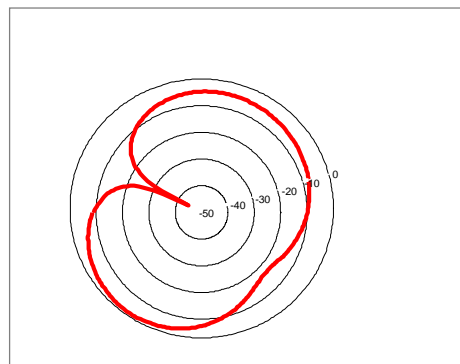


PLS shown in white with standard SMA connector.

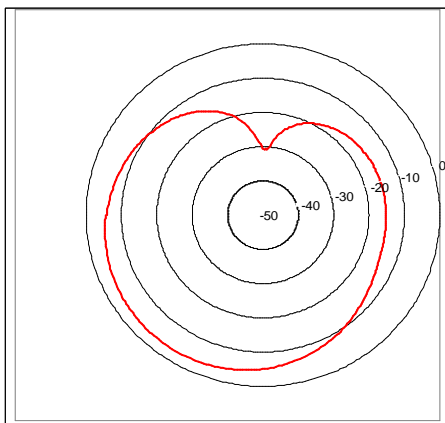
**303 MHz Horizontal Pattern**



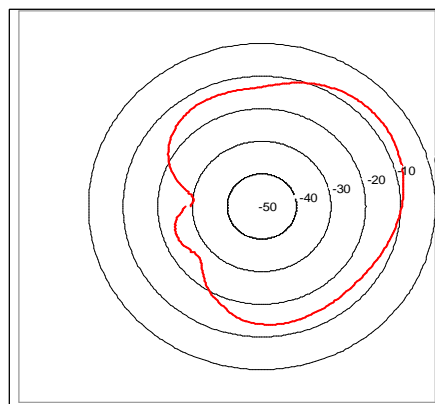
**303 MHz Vertical Pattern**



**433 MHz Horizontal Pattern**



**433 MHz Vertical Pattern**



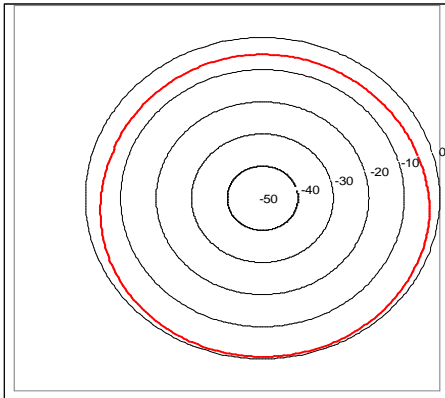
**LS400** Short to mid-range antenna adequate for covering small rooms or areas of a room.

LS400 shown in black with standard SMA connector.

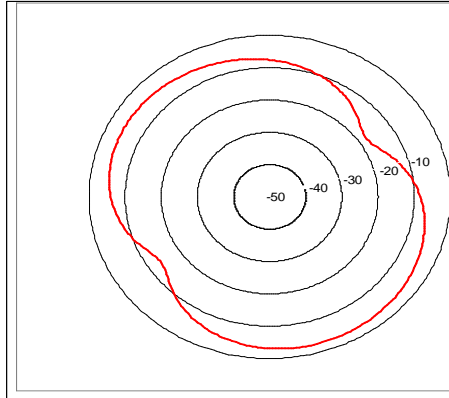


Antenna	LS400
Physical Characteristics	
Type	Low-gain Directional
Dimensions (in.)	4 x 4 x 2
Weight (ozs.)	8
Radome/Casing	NEMA 4/4x Thermoplastic
User Environment	
Temperature: Operating and Storage	-20° to +70° C (-4° to +158° F)
Connector	SMA standard, BNC and others available
Frequency	303 MHz to 450 MHz
Range (diameter)	1 to 60 feet
Front to back Ratio	20dB
Maximum Power Input	.5 watts

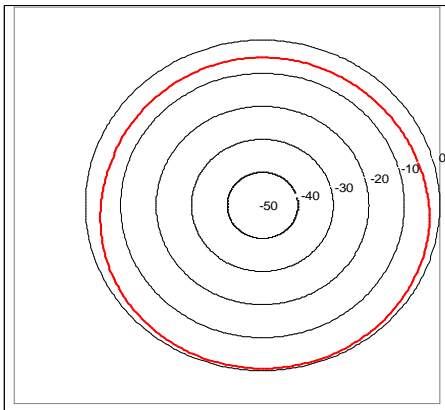
**303 MHz Horizontal Pattern**



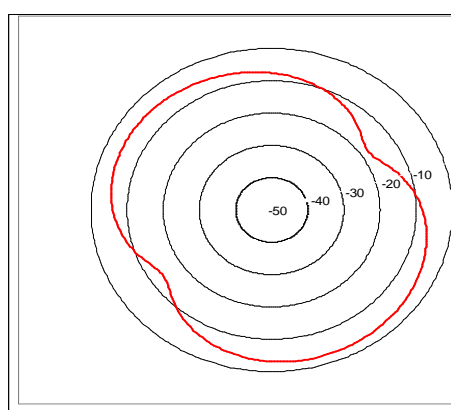
**303 MHz Vertical Pattern**



**433 MHz Horizontal Pattern**

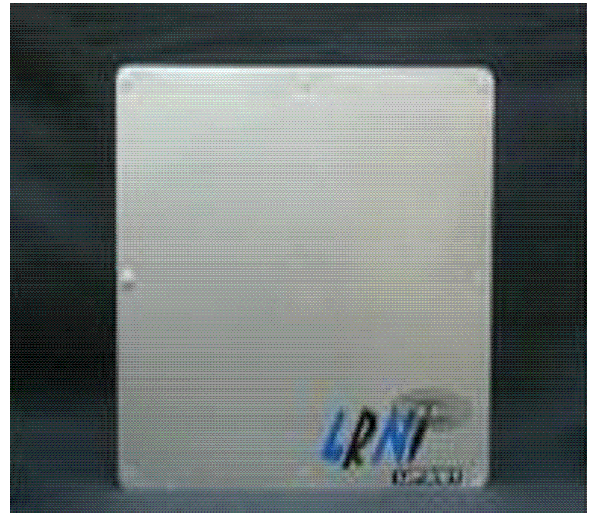


**433 MHz Vertical Pattern**



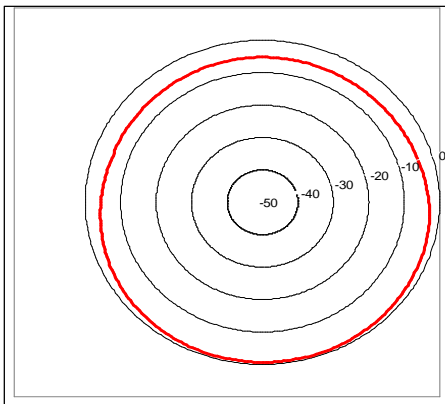
**V500** Mid to long-range antenna for large coverage areas including shipping yards, parking lots, and outdoor entrances.

Antenna	V500
<b>Physical Characteristics</b>	
Type	Low-gain Directional
Dimensions (in.)	12 x 12 x 4
Weight (ozs.)	64
Radome/Casing	NEMA 4/4x Thermoplastic
<b>Operating and Storage</b>	
Temperature: Operating and Storage	-20° to +70° C (-4° to +158° F)
Connector	SMA standard, BNC and others available
Frequency	303 MHz to 450 MHz
Range (diameter)	Up to 1,000 feet
Front to back Ratio	20dB
Maximum Power Input	.5 watts

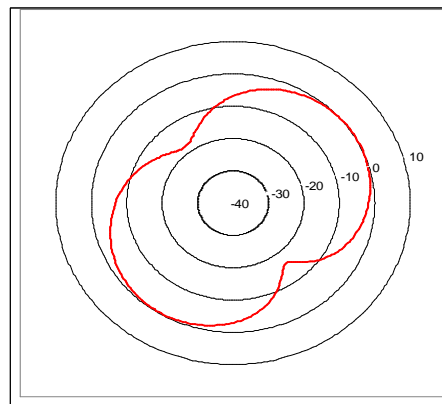


V500 shown in gray, standard SMA connector on the back.

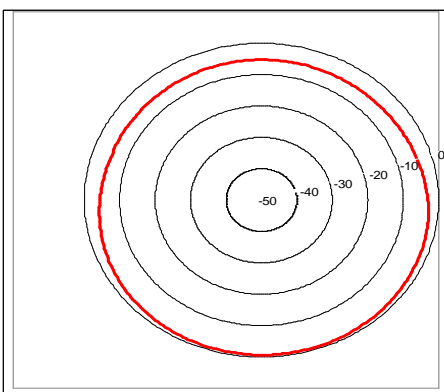
**303 MHz Horizontal Pattern**



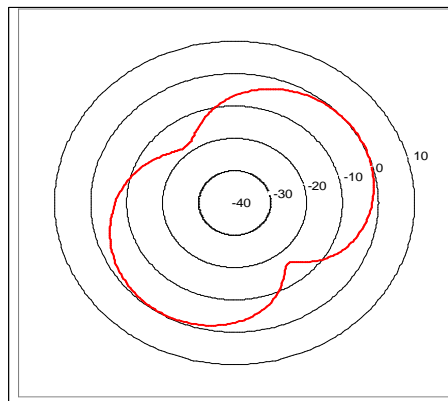
**303 MHz Vertical Pattern**



**433 MHz Horizontal Pattern**



**433 MHz Vertical Pattern**





## **LRNI Antenna Warranty**

LRNI warrants that the Products we sell will be free from defects in materials and workmanship. LRNI provides a limited lifetime warranty on all our antennas, as further described in the following.

This warranty is limited to the repair and/or replacement, at LRNI's discretion, of defective or non-conforming Product, and LRNI shall not be responsible for the failure of the Product to perform specified functions, or any other non-conformance caused by or attributed to: (a) any misapplication or misuse of the Product; (b) failure of Customer to adhere to any of LRNI's specifications or instructions; and (c) neglect of, abuse of, or accident to the Product. Tampering voids warranty.